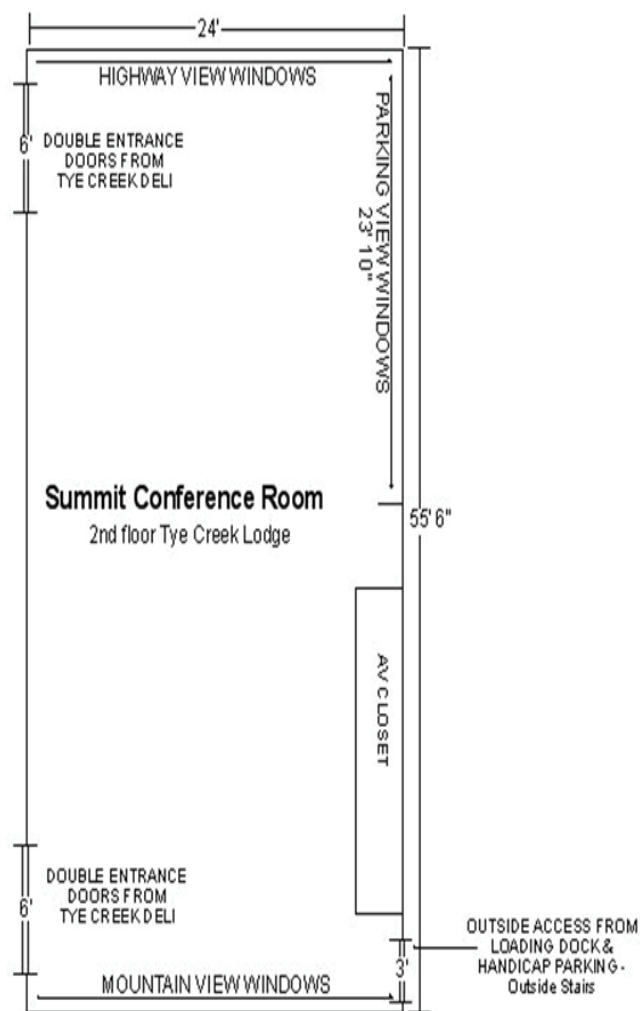
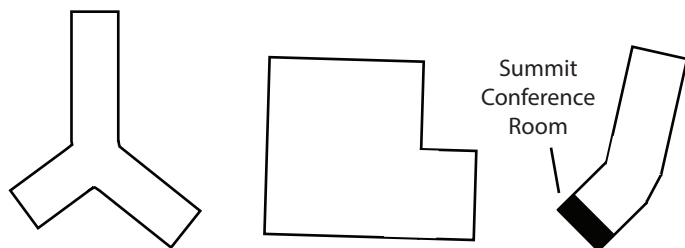


# Summit Conference Room



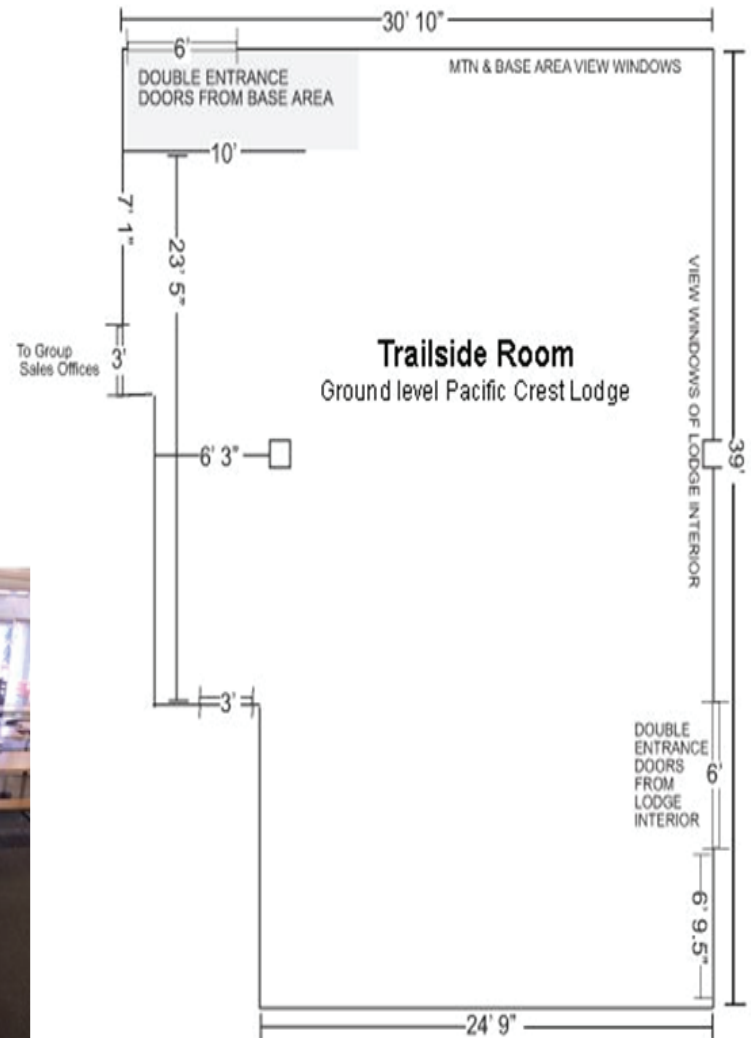
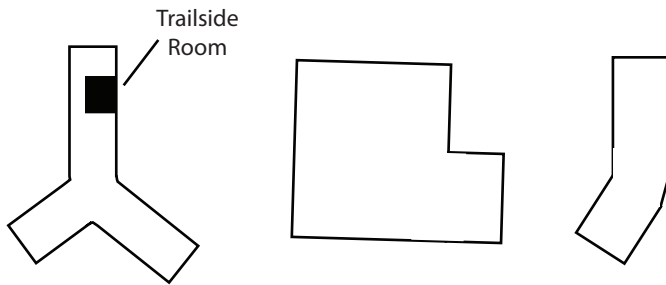
2nd Floor of Tye Creek Lodge

1100 Sq Ft.

Capacity: 80

**This is a private room with views of the slopes and mountains. It has full audio visual equipment and satellite radio available. We can custom arrange this room for each group whether it's a party, classroom style, morning meeting, team building session, or buffet.**

# Trailside Room



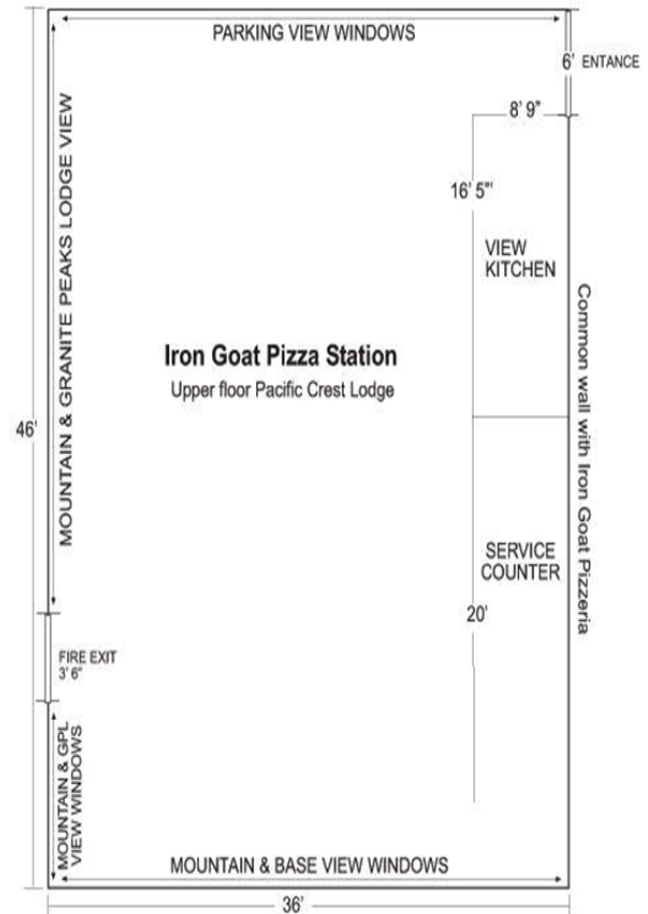
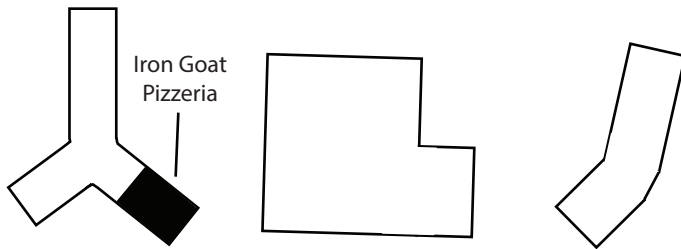
1st Floor of Pacific Crest Lodge

1030 sq. ft.

Capacity: 78

**This is our ski-in ski-out, semi-private room that is perfect your group's "base camp". It's great for large or small groups, wine tastings, skills trainings or just hanging out.**

# Iron Goat Pizzeria



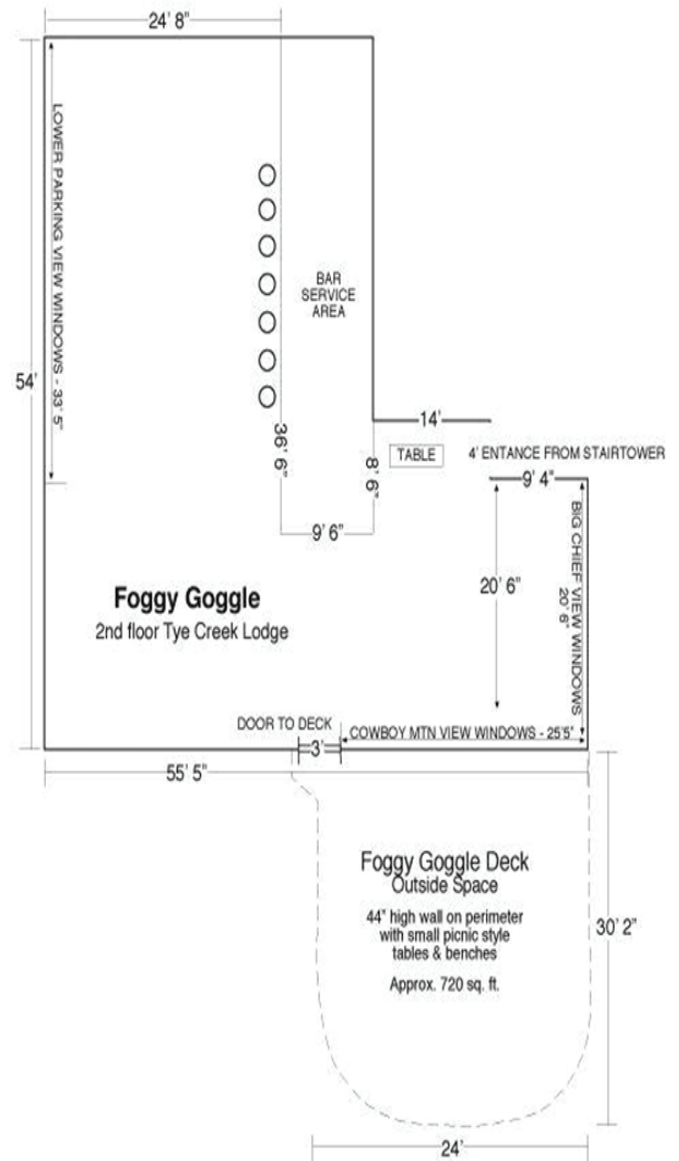
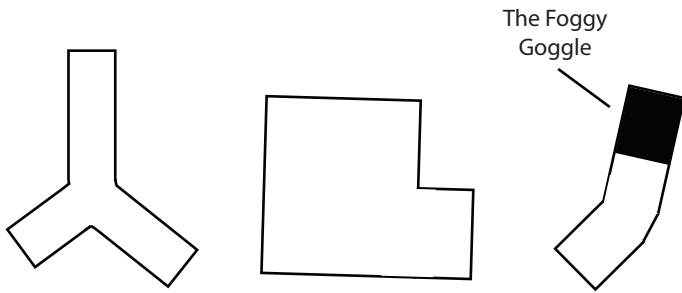
Upper floor Pacific Crest Lodge

1400 Sq Ft.

Capacity: 140

**Take over the pizzeria or extend to the entire second floor of the Pacific Crest Lodge! Enjoy watching the game with unobstructed views of Cowboy Mountain. With room to spread out, this is the perfect hang out space for large groups.**

# The Foggy Goggle



2nd Floor of Tye Creek Lodge

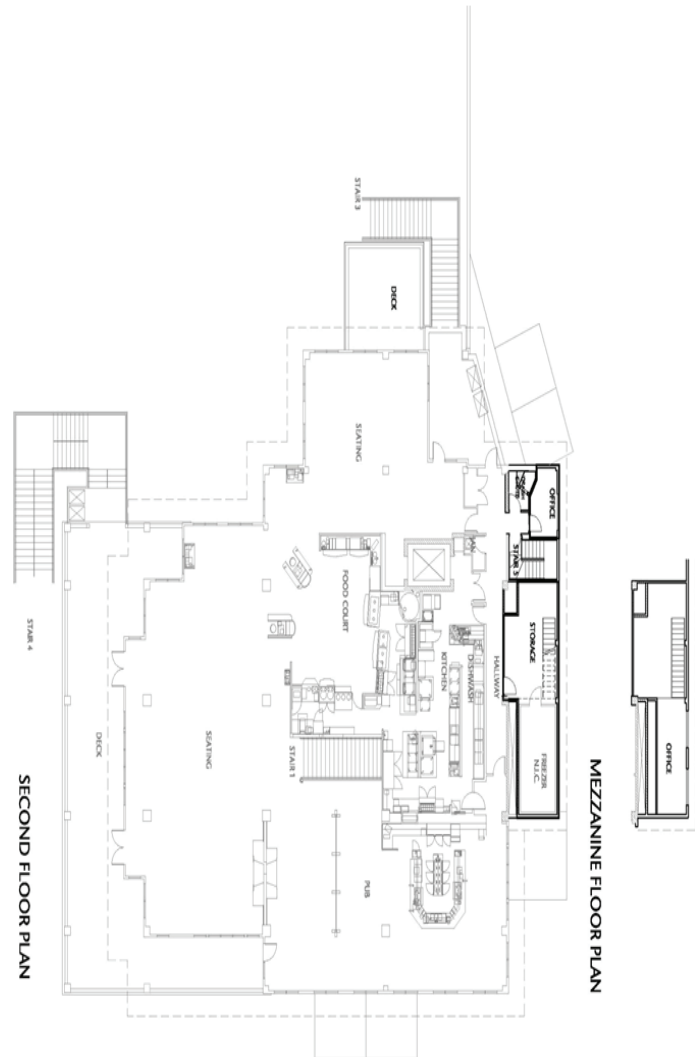
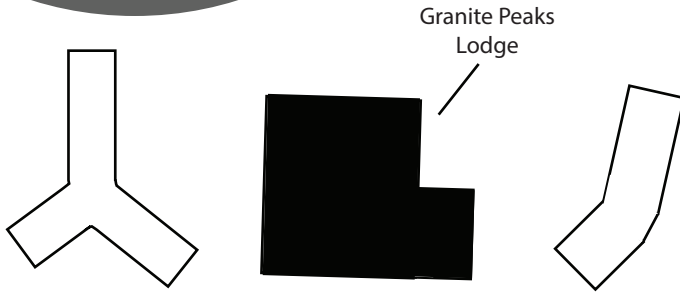
1900 Sq Ft.

Capacity: 134

**This is an ideal space for large groups and is a favorite of many corporate retreats. The relaxed lounge setting, with space for live entertainment, allows for a good time for all. It comes complete with its own private balcony with spectacular mountain views!**



# Granite Peaks Lodge



2nd Floor Granite Peaks Lodge

Capacity: 300

**This is our largest space in the center of the resort with access to the Bulls's Tooth (a favorite bar on the mountain), areas for photo booths, DJs and other entertainment. We can custom arrange the room to fit your needs. Soak up the sun on the balcony that overlooks the entire base area and provides an unparalleled panoramic view of Big Chief and Cowboy Mountains.**