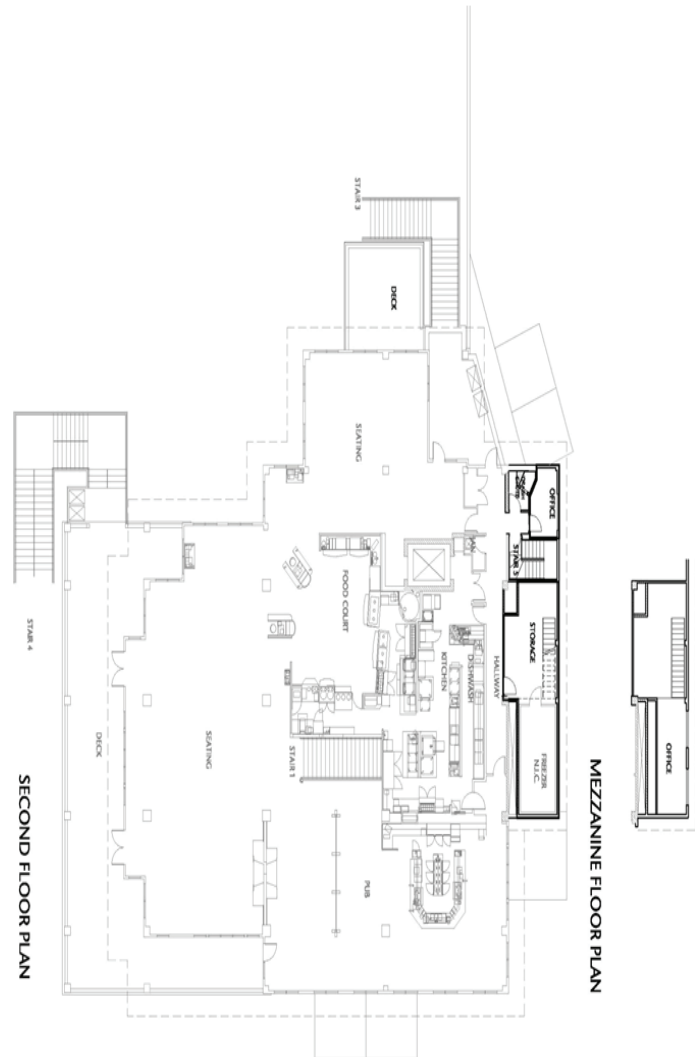
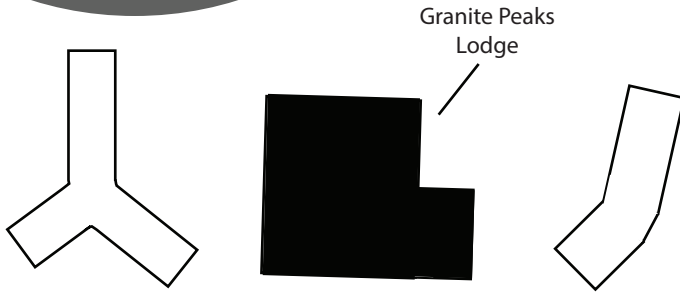


Granite Peaks Lodge



2nd Floor Granite Peaks Lodge

Capacity: 300

This is our largest space in the center of the resort with access to the Bulls's Tooth (a favorite bar on the mountain), areas for photo booths, DJs and other entertainment. We can custom arrange the room to fit your needs. Soak up the sun on the balcony that overlooks the entire base area and provides an unparalleled panoramic view of Big Chief and Cowboy Mountains.